

GAS PIPE REPLACEMENT

Why we replace the gas pipe section and all fittings on every gas water heater replacement



DO YOU KNOW ABOUT YOUR GAS PIPE?

1

COPPER PIPE (Deformation risk)

Copper is a soft metal. This is the source of its biggest problem when reused.

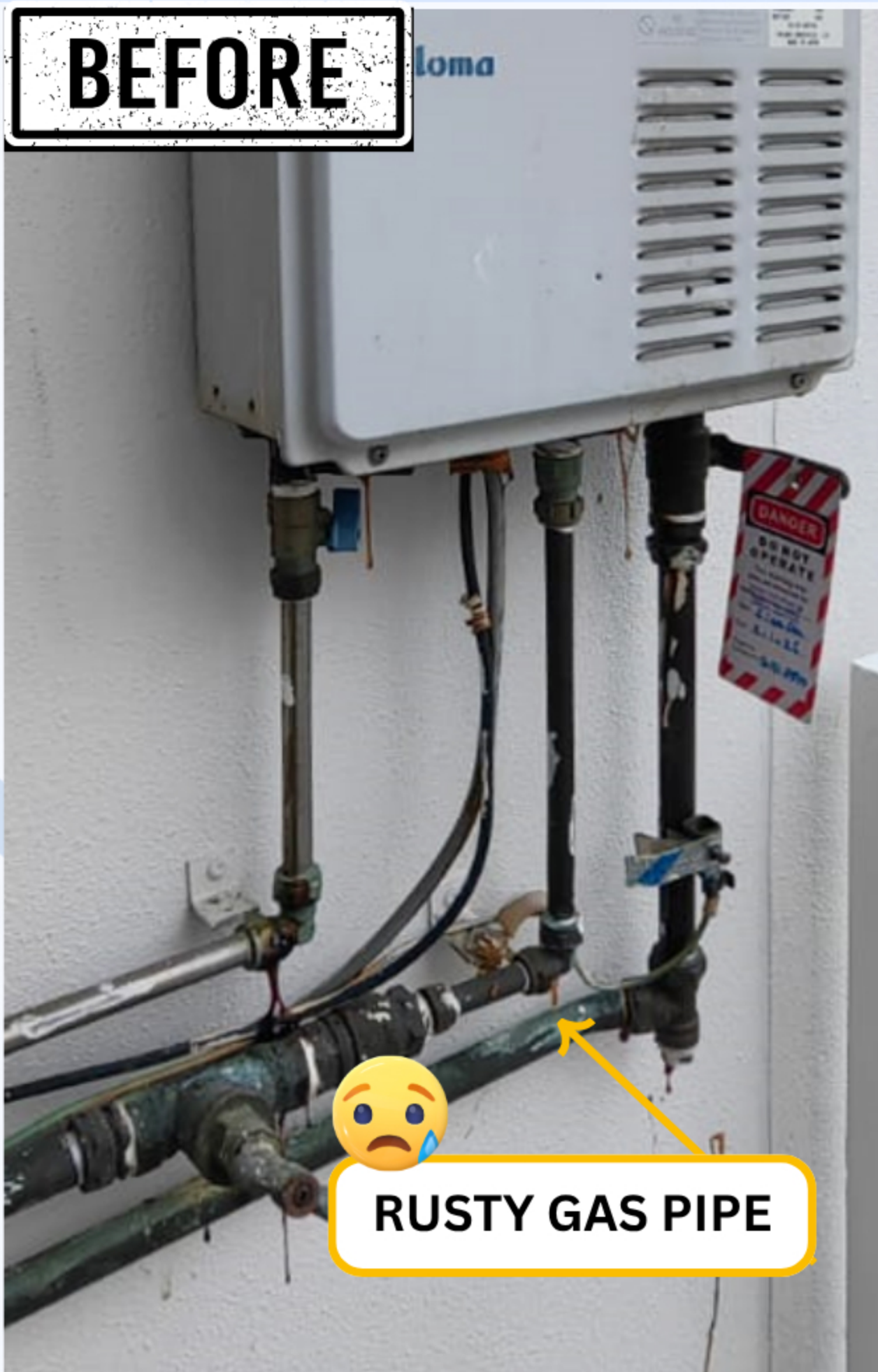
2

GALVANISED IRON (Corrosion risk)

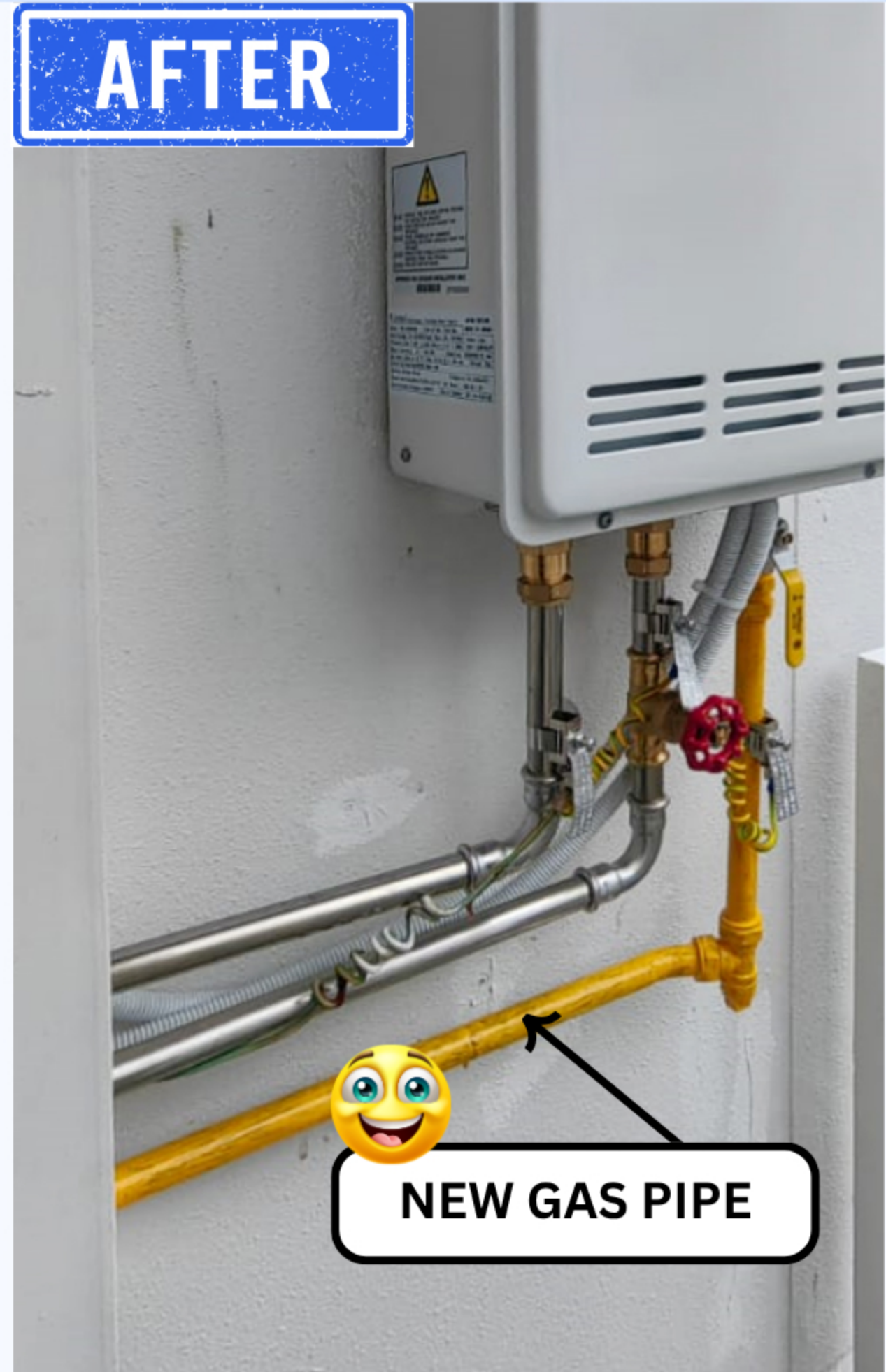
GI pipe is more rigid than copper but corrodes substantially in Singapore's outdoor environment.

ACTUAL SITE PHOTOS

BEFORE



AFTER



Under SS608:2024 Section 7(j), all gas pipes outside dwelling units must be painted **canary yellow** to colour code BS 381C number 309



Labour already spent. The \$50 buys new pipe, new fittings, and zero old joints.